

**Freightliner Cab  
Century Class**

- Art.-Nr. **237** white
- Art.-Nr. **238** yellow
- Art.-Nr. **239** black
- Art.-Nr. **240** red

**Dear modelling enthusiast!**

We are glad that you have decided on one of the precious **WEDICO** truck models! For the manufacture of individual parts **WEDICO** uses durable materials of high quality - rarely to find in these days. This guarantees durability and enjoyment of your model for years to come.

If you should ever require replacement parts, please get in touch with your dealer or directly with **WEDICO**. For order purpose it is important using not only those EDP-numbers mentioned within the general parts list but also indicating the necessary details concerning colour, quantity and exact term of the spares required. You may be assured that **WEDICO** will supply the replacement part as quick as possible.

Enjoy assembling your truck!

Your **WEDICO**-Team

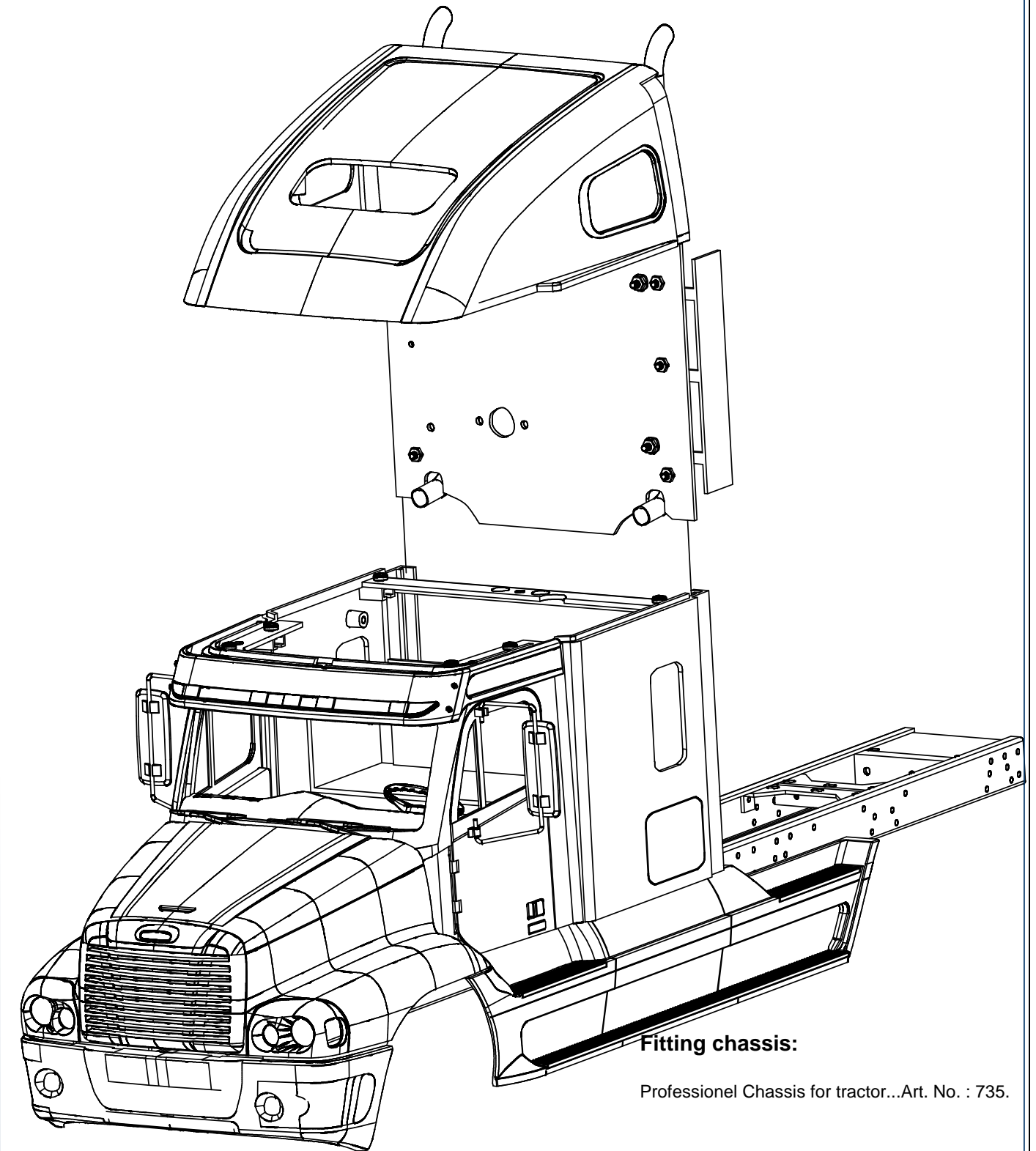
**Tip:** The make-up of this instruction allows putting together your own booklet if you wish so. For this purpose you have to fold and stick the pages as follows:

1. Turn round the **first page** with the **English text facing downwards**, and lay **the next page** on top of the first, with the **English text facing upwards**,
2. Glue the two pages together at the left outer edge (e.g. using adhesive tip) and fold the top page across to the left (with the fold vertically in the middle).
3. Lay **the next page** on top of the previous one with **the English text facing upwards**, stick the left outer edges and fold over to the left again as before. Similarly add the remaining pages.
4. Finally glue together all pages at the inner edges, too, and **fold the original page over as a cover**, sticking it firmly at the left hand edge.

**Accessories (options):**

- RC-Antenna ..... Art.-No. 155
- Electrical System ..... Art.-No. 782
- Electrical System "MF"..... Art.-No. 796

For various other possibilities of outfit please find our suggestions and tips in the **WEDICO** catalog.



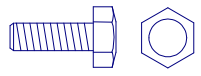


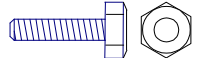

















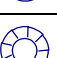
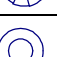
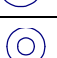
**Fitting chassis:**

Professional Chassis for tractor...Art. No. : 735.



© 2005 by **WEDICO**, P.O. Box 20 04 18, D - 42 204 Wuppertal, Germany.  
We can assume no liability for technical or typographical errors.  
We reserve the right to incorporate technical modifications.  
Duplication and reproduction only with our express consent.

Screws, washers, etc. at scale 1:1

	<b>Hex head nut M4 x 14</b> Part No 27224 DIN 933
	<b>Screw M3 x 20</b> Part No 20224 DIN 7985
	<b>Stud bolt M3 x 18</b> Part No 20258 DIN 551
	<b>Hex head screw M3 x 12</b> Part No 30122 DIN 933
	<b>Screw M3 x 12</b> Part No 20224 DIN7985
	<b>Screw M3 x 10</b> Part No 20020 DIN 7985
	<b>Screw M3 x 8</b> Part No 20018 DIN 7985
	<b>Screw M3 x 6</b> Part No 20016 DIN 7985
	<b>Countersunk screw M 3 x 6</b> Part No 20028 DIN 965
	<b>Tapping screw 2,2 x 6,5</b> Part No 23690 DIN 7981
	<b>Tapping screw 2,2 x 4,5</b> Part No 20052 DIN 7981
	<b>Screw M2 x 8</b> Part No 21269 DIN 7985
	<b>Screw M2 x 6</b> Part No 21268 DIN 7985
	<b>Screw M 2 x 5</b> Part No 26238 DIN 7985
	<b>Nute M3</b> 20040-DIN 934
	<b>Square nute M3</b> Part No 20044 DIN 562
	<b>Hex head nute M3 (Stop nute)</b> Part No 30568 DIN 985
	<b>Nute M2</b> Part No 21208 DIN 934
	<b>Washer phi 4,3</b> Part No 20048 DIN 125
	<b>Washer phi 3,2 big</b> Part No 20190 DIN 9021
	<b>Washer phi 3,2</b> Part No 20046 DIN 125
	<b>Serated washer phi 3,2</b> Part No 20054 DIN 6798
	<b>Spring washer phi 3,2</b> Part No 20056 DIN 137
	<b>Washer phi 2,2</b> Part No 21210 DIN 125

**General notes**

Before you start the assembly of your cab you must have decided:

- whether to mount the cab with or without the sleeper,
- whether your truck should be used as a static model (without the electrical equipment and without radio controlled functions) or as a driving model.

**Electrical Installation**

If you intend adding the lighting we recommend using the following articles:

- **Electrical System for Conventional Truck, Art.-Nr. 782**, and as a supplement to this system the **Infrared System as Transmitter System, Art.-No. 790**, to enable the wireless transmission of all the information to your semi-, or full trailer.
- **Electrical System "MF", Art.-No. 796**: This System allows not only the wireless transmission of all information to your semi-, or full trailer, but is also able to transmit proportional pulses.

**The assembly instruction**

Please follow the steps of assembly accordingly to the instructions. Each single assembly step is described and illustrated, and furthermore does the **parts lists** indicate the required components for the actual construction step. Carefully observe the notes explaining the various steps of assembly and use only those parts which are provided. This will insure a correct result of assembly.

Individual assembly parts contained in **different kits** are denoted with their part number in **brackets**. **Accessories** are indicated on the assembly plan with the appropriate **Art.-No.** **Individual components in the accessory kits** are denoted by a **boldface A in front of the identification number** and not included in the parts list.

For easier identification of different screws and washers, on the left side of this page we are adding an illustration of the **most important parts at original scale**. Not illustrated parts are to be identified by comparing the proportion.

	Technical description
<b>Cab</b>	Die cast aluminium and sheet, stainless steel threaded connectors and bending wire components, high impact plastic components. All individual parts are screwed. All models may be dismounted and reassembled again. Hood tiltable. The model is prepared for RC-installation.
<b>Colour</b>	Extremely hard epoxy powder coating. Excellent base when repainting for special purposes.
<b>Measurements</b>	Length ..... 215 mm Width ..... 178 mm Height ..... 168 mm Weight ..... 0,8 kg

Qty.	EDP No.	Assembly part	Qty.	EDP No.	Assembly part
2	20028	Countersunk screw M 3 x 6	1	30170	Support lamp, bumper right
5	20034	Screw M 3 x 10	2	30172	Headlight lens, bumper small
20	20040	Nut M 3	2	30174	Headlight lens, bumper big
26	20044	Square nut M 3	1	30176	Rear panel cab, Century
49	20046	Washer 3,2	2	30178	Exhaust shield
2	20052	Tapping screw phi 2,2 x 4,5	2	30180	Exhaust tail pipe
4	20054	Serated washer A phi 3,2	2	30182	Handle
2	20056	Spring washer A phi 3,2	2	30184	Support side spoiler
20	20074	Muffler	1	30186	Cab door left
4	20079	Muffler cup	1	30188	Cag door right
2	20084	Door handle	1	30190	Mirror support left
2	20086	Door lock	1	30192	Mirror support right
4	20088	Spring bushing	1	30194	Inside door panel left
4	20224	Screw M 3 x 20	1	30196	Inside door panel right
3	20238	Screw M 2 x 5	2	30198	Side mirror
4	20258	Stud bolt M 3 x 18	2	30200	Door window
28	20268	Screw M 2 x 8	2	30202	Logo door
2	20360	Clips (Mirror top)	2	30204	Mirror foil
4	20426	Fixing cap for exhaust screen	1	30206	Roof Freightliner
2	21202	Exhaust manifold	1	30208	Upper window top
36	21208	Nut M 2	1	30210	Upper window left
28	21210	Washer phi 2,2	1	30212	Upper windows right
8	21268	Screw M 2 x 6	1	30214	Ground plate
1	21962	Seat mounting panel	1	30216	Upper side body right
2	22900	Washer phi 3,2 big	1	30218	Upper side body left
2	23690	Tapping screw phi 2,2 x 6,5	1	30220	Connection plate front
2	24288	Door lock (Volvo)	1	30222	Connection plate rear
2	24292	Mirror hinge, bottem	1	30224	Dashboard connection plate
2	24304	Lock guide, door	1	30226	Dashboard
2	25976	Door hinge 1 (Peterbilt)	1	30228	Gear shifter
2	25978	Door hinge front unit, top (Peterbi)	1	30230	Steering wheel
2	25980	Pin for door hinge (Peterbilt) 36mm	2	30232	Lower window
2	26018	Door hinge 2 (Peterbilt)	2	30234	Windsreen wiper
2	26020	Door hinge front unit, bottem(Pet.)	1	30236	Windscreen
2	26030	Socket, bucket seat	1	30238	Sun visor
2	26032	Back, bucket seat	2	30240	Survvisor lens
2	26034	Foot, bucket seat	2	30242	Battery box
4	27224	Hex head screw M 4 x 14	1	30244	Support driver's cap, rear
1	27290	Guide sheet for roof,	1	30246	Connection plate, lower side body
1	27292	Locking sheet for roof, left	1	30248	Reinforcement plate
1	27294	Locking sheet for roof, right	1	30250	Support driver's cap, front right
4	28870	Distance sleeve	4	30252	Support driver's cab, front left
4	30110	Distance bolt M 3 x 6	8	30254	Bumper bracket
4	30112	Rim adapter for widening of track	1	30256	Lower side body right
2	30122	Hex head screw M 3 x 12	1	30258	Lower side body left
1	30134	Hood Freightliner	2	30260	Short step board, rear
1	30136	Radiator grill Freightliner	1	30262	Short step board, front left
1	30146	LOGO	2	30264	Short step board, front right
1	30148	Headlight housing left	1	30266	Long step board
1	30150	Headlight housing right	2	30268	Side spoiler right
2	30152	Headlight lens smal - yellow	1	30270	Side spoiler left
2	30154	Headlight lens big	1	30272	Support for hood hinge
1	30156	Rectangular lens left - yellow	1	30274	Side spoiler lens
1	30158	Rectangular lens right - yellow	1	30276	Step footboard, rear
1	30160	Lampe support left	1	30278	Support footboard, rear
1	30162	Lampe support right	2	30552	Double sided adhesive pad
1	30164	Bumper front	13	30568	Hex head nut M 3 (Stop nut)

Qty.	EDP No.	Assembly part	Qty.	EDP No.	Assembly part
34	20016	Screw M 3 x 6	1	30166	Hood hinge

# 1. Assembly Hood

## Assembly of an electric composition :

First insert the bulbs in the lamp supports.

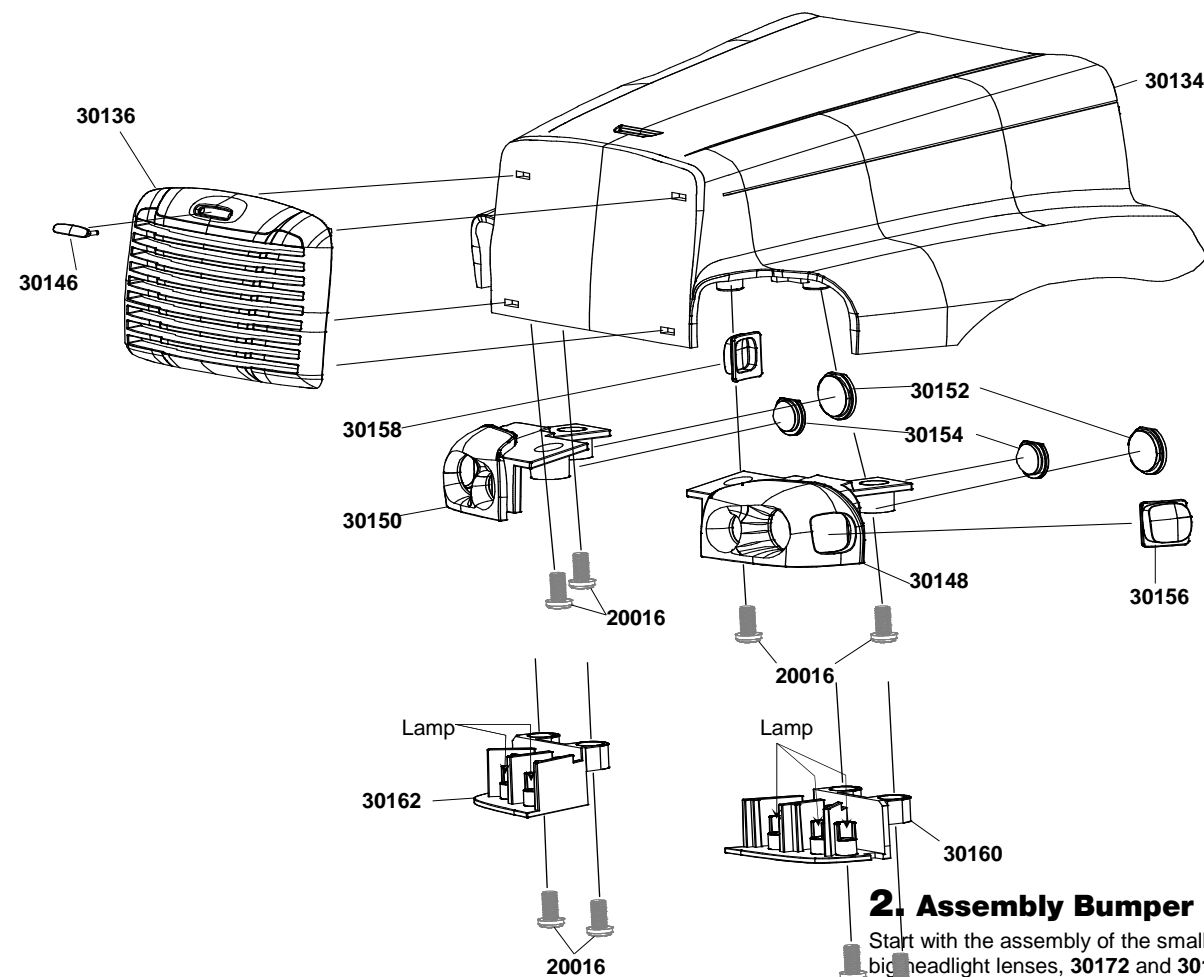
The manufacturer's logo is inserted in the corresponding opening in the radiator grille. Stick the logo or fuse the overlapping pins with a hot soldering iron **ATTENTION !**

The radiator grille is now inserted in the slots of the hood. You can either stick the radiator grille or fuse it inside with a soldering iron. Press the yellow rectangular lenses **30156** left and **30158** right into the headlight housings **30148** and **30150**. Insert the small and the big headlight lens **30152** and **30154** in the corresponding headlight housings. By means of the screws M3x6 **20016** the headlight housings are fixed to the hood.

The lamp supports, left and right, **30160** and **30162**, optionally equipped with bulbs, are also fixed under the hood by 2 screws M3x6, **20016**.

Assembly step 1 Hood

Qty.	No.	Assembly part
8	20016	Screw M 3 x 6
1	30134	Hood Freightliner
1	30136	Radiator grille Freightliner
1	30146	LOGO
1	30148	Headlight housing left
1	30150	Headlight housing right
2	30152	Headlight lens smal - yellow
2	30154	Headlight lens big
1	30156	Rectangular lens left - yellow
1	30158	Rectangular lens right - yellow
1	30160	Lamp support left
1	30162	Lamp support right



# 2. Assembly Bumper

Start with the assembly of the small and the big headlight lenses, **30172** and **30174**. Normally the lenses can be cramped. The right **20016** is given by the lamp support. Lenses can also be stuck, but **ATTENTION:** the solvents contained in the adhesive may dull the

lenses. A little drop from the hot melt gun will do it. Fix the hood hinge **30166** with 2 screws M3 x 6 **20016** under the hood. After fixing the head-light lenses the lamp supports **30168** and **30170** are fixed at the bumper with 2 screws M3 x 6 **20026**. Finally the hood is fixed movable with 2 screws M3 x 6 **20016** and by a retaining plate to the bumper.

Assembly step 2 Bumper

Qty.	No.	Assembly part
8	20016	Screw M 3 x 6
1	30164	Bumper front
1	30166	Hood hinge
1	30168	Lamp support bumper left
1	30170	Lamp support bumper right
2	30172	Headlight lens - bumper - smal
2	30174	Headlight lens - bumper - big
1	30272	Support for hood hinge

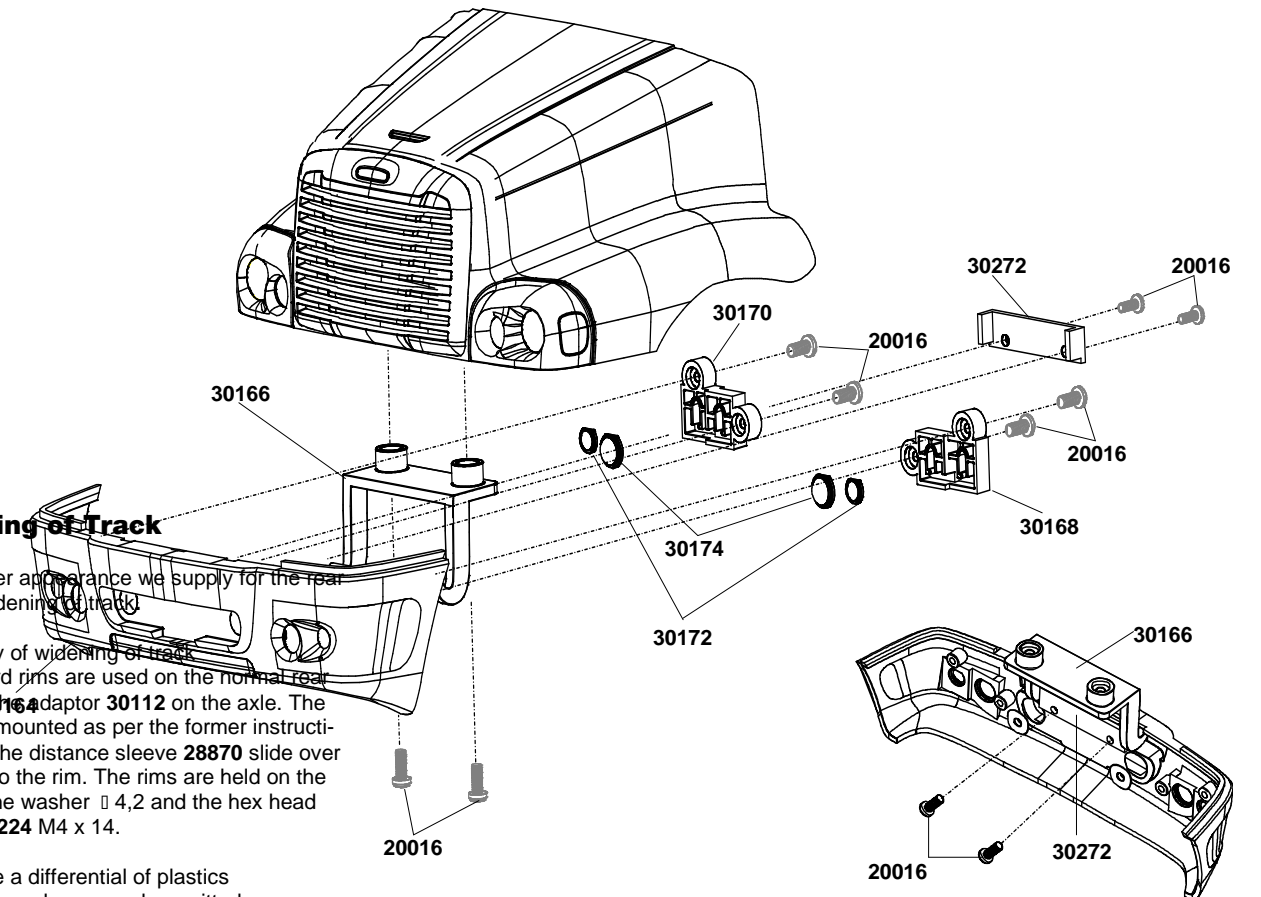
# Widening of Track

For a nicer appearance we supply for the rear axle a widening of track.

Assembly of widening of track  
If standard rims are used on the normal rear axle push the adaptor **30112** on the axle. The rims are mounted as per the former instructions. Let the distance sleeve **28870** slide over the axle to the rim. The rims are held on the axle by the washer  $\square 4,2$  and the hex head screw **27224** M4 x 14.

If you use a differential of plastics the distance sleeve can be omitted.

For metal differentials the axle will be extended by the distance bolt **30110** after the adaptor was put on. Further assembly is done as usual.

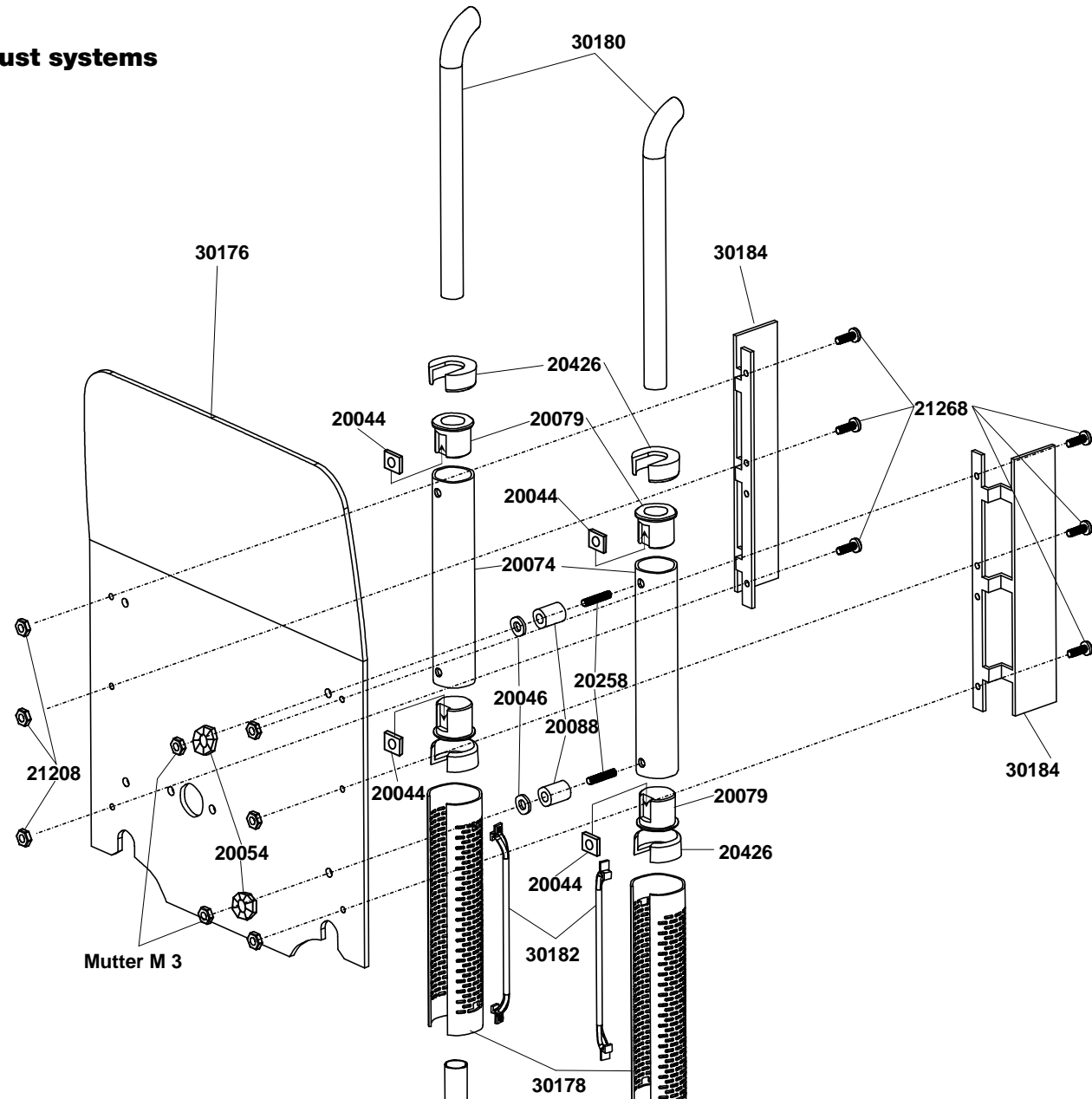


Assembly step Widening of track

Qt.	No.	Assembly part
4	27224	hex head screw M4 x 14
4	28870	Distance sleeve
4	30110	Distance bolt M 3 x 6
4	30112	Rim adapter for widening of track



### 3.Exhaust systems



#### 3. Assembly exhaust rearpanel

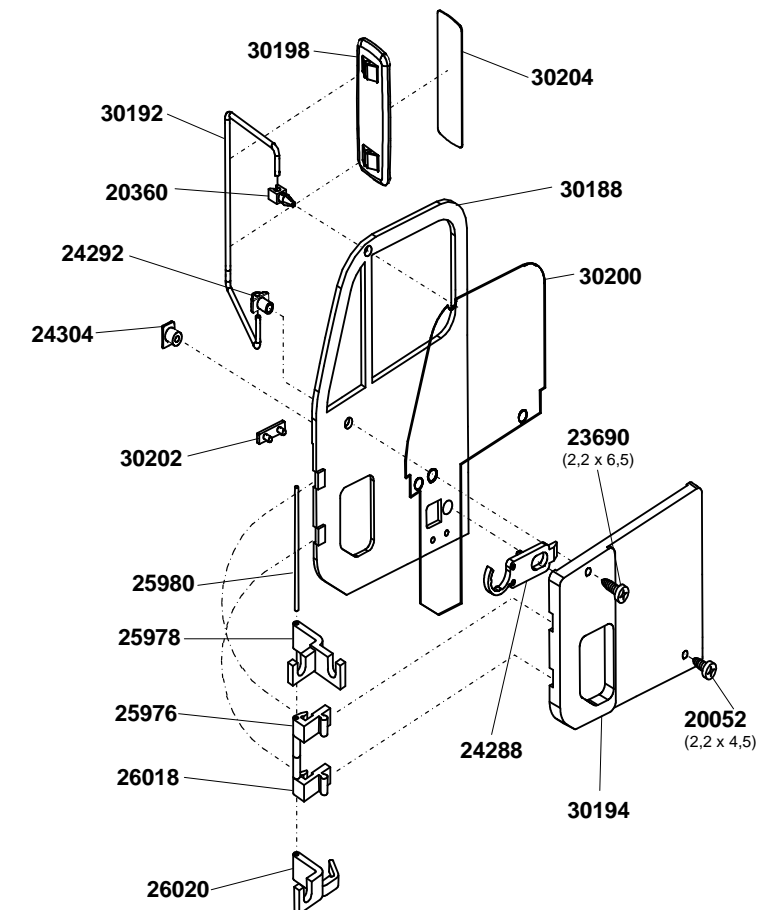
First assemble the supports of side spoiler **30184**. Fix 6 screws M 2 x 6 **21268** with nuts **21208** at the back of the driver's cab **30176**. Now 1 square nut M 3 **20044** each is put into the slot of the muffer cap **20079**. Fit both caps into the muffer so that the thread is exactly behind a bore hole. 1 stud bolt **20258** M 3 x 16 is lead into the thread as far as the exhaust tail pipe **30180** and the the exhaust manifold **21202** are fixed. After adjusting the exhaust and the manifold tighten the stud bolts with the screwdriver for slotted head screws. Remove the protection film from the exhaust shield **30178** and insert the handles **30182**. The exhaust screen ist fixed above the muffer and stabilized with the fixing caps **20426**. Now a washer  $\phi$  3,2 **20046** and a sleeve **20088** are slid over each stud bolt. The complete exhaust is fixed to the back of the driver's cab with a serated washer **20054** and a screw M3.

#### 4. Driver's cab doors

Passenger's door

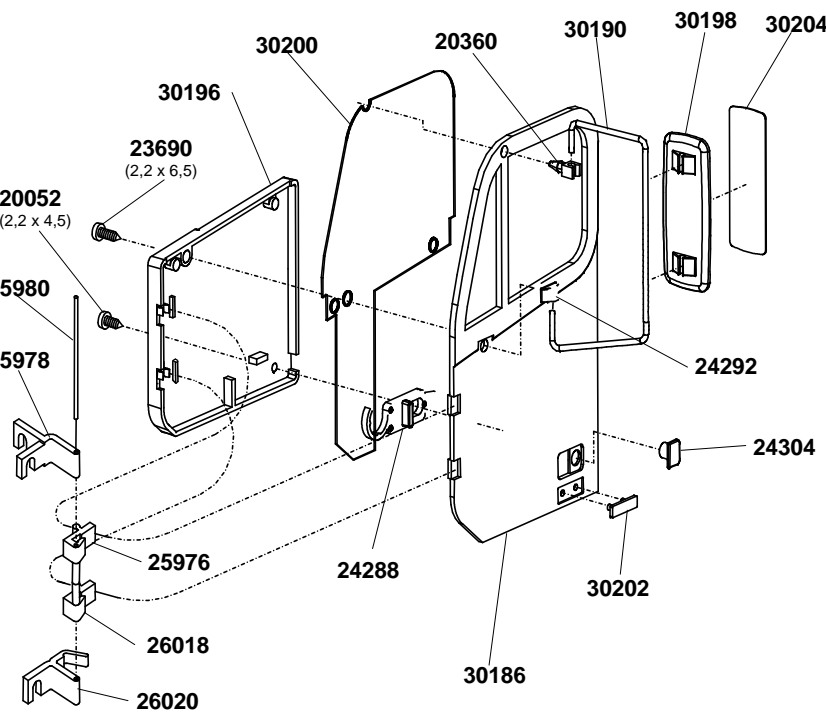
Assembly step 3 Exhaust Rear panel		
Qty..	Nr.	Assembly part
4	20040	Nut M3
4	20044	Square nut M3
4	20046	Washer $\phi$ 3,2
4	20054	Serated washer $\phi$ 3,2
2	20074	Muffer
4	20079	Muffer cap
4	20088	Spring bashing
4	20258	Stud bolt M3 x 18
4	20426	Fixing cap for exhaust screen
2	21202	Exhaust manifold
6	21208	Nut M2
6	21268	Screw M2 x 6
1	30176	Rear panel cab, Freightliner
2	30178	Exhaust shield
2	30180	Exhaust tail pipe
2	30182	Exhaust handle
2	30184	Support side spoiler

### 4.Assembly of driver's cab doors



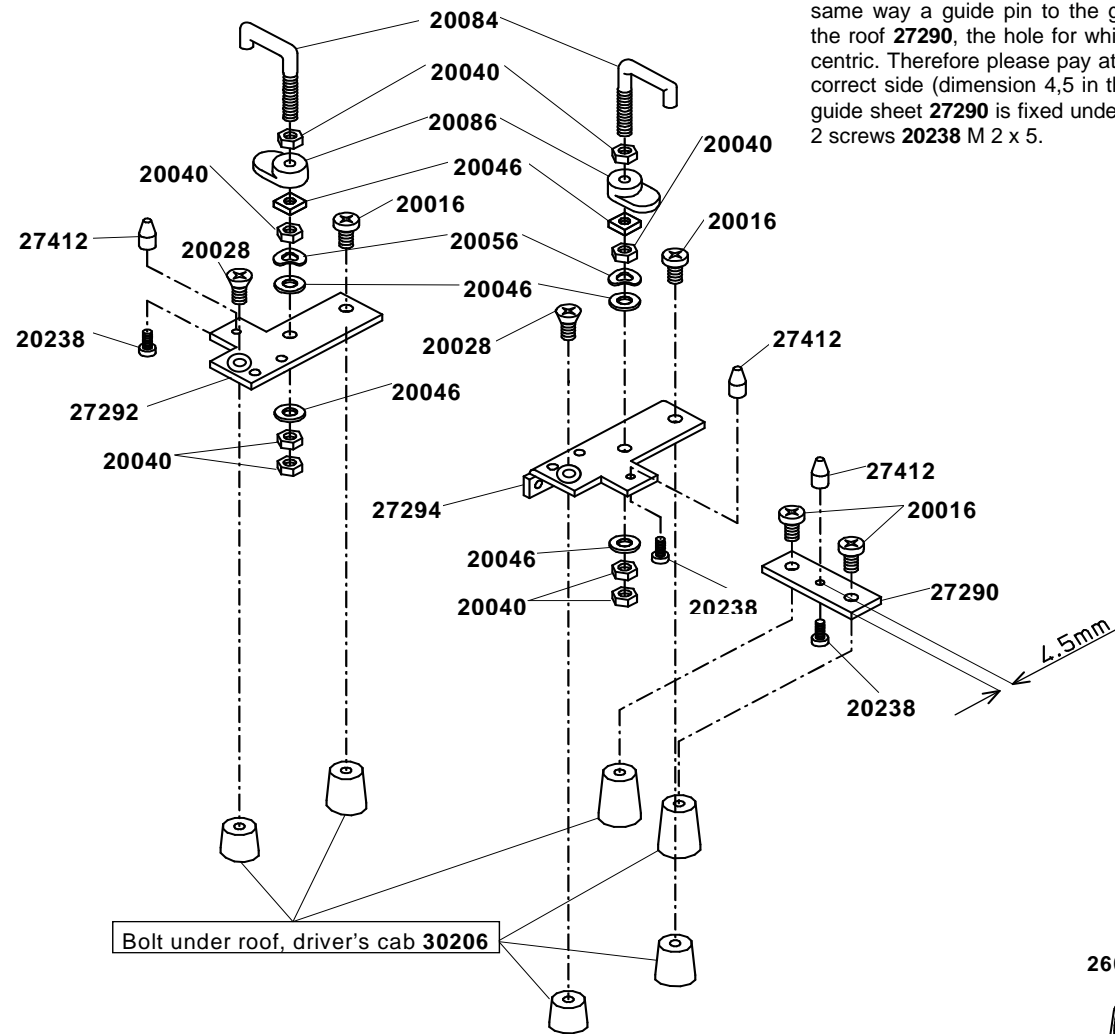
Driver's door

Start with the assembly of the door joints. Pay attention to the different sequences of right and left door. Press the bolts **25980** into the bore holes of the door joints **26020** and **25978**. One door joint each no. 1 and 2 (**25976** and **26018**) are movable posed between top and bottom joints. Now press the door hinges 1 and 2 into the recesses of the door. After removing the plastic foils on both sides place one door window at the inside door. Press the lock guide **24304** from outside into the door. The door lock **24288** is put on the door so that the slider is put through. The lining inside the driver's door **30196** or **30194** is placed on the door so that the bore holes are exactly above the guide of the door lock and above the lower mirror support. Now press the clips of the door hinge into the inside lining. One tapping screw **23690**  $\phi$  2,2 x 6,5mm is tightened in the lower mirror support, the other tapping screw **20052**  $\phi$  2,2 x 4,5mm is tightened in the door lock. The mirror foil **30204** is stuck to the side mirror. The supports **30190** (left) and **30192** (right) are pressed to the clips **20360** (top) and **24292** (bottom). Start below with the lower clip and press then to the upper clip. Now the mirror can be pressed on the mirror support. Press the two logos **30202** into the corresponding bore holes in the door. The door lock **24288** is put on the door .



Assembly step 4 Doors		
Qty.	No.	Assembly part
2	20052	Tapping screw $\phi$ 2,2 x 4,5
2	20360	Clips (Mirror top)
2	23690	Tapping screw $\phi$ 2,2 x 6,5
2	24288	Door lock (Volvo)
2	24292	Mirror hinge, bottom
2	24304	Lock guide, door
2	25976	Door hinge 1 (Peterbilt)
2	25978	Door hinge front unit top (Peterbilt)
2	25980	Pin for door hinge (Peterbilt)
2	26018	Door hinge 2 (Peterbilt)
2	26020	Door hinge front unit bott (Peterbilt)
1	30186	Cab door left
1	30188	Cab door right
1	30190	Mirror support left
1	30192	Mirror support right
1	30194	Inside door panel right
1	30196	Inside door panel left
2	30198	Side mirror
2	30200	Door window
2	30202	Logo door
2	30204	Mirror foil

### 5. Roof, Drivers cab



Fix a guide pin at both sides of the locking sheets of the roof by means of one each bolt 27412 and screw 20238 M 2 x 5. Fix in the same way a guide pin to the guide sheet of the roof 27290, the hole for which is not concentric. Therefore please pay attention for the correct side (dimension 4,5 in the plan) ! The guide sheet 27290 is fixed under the roof with 2 screws 20238 M 2 x 5.

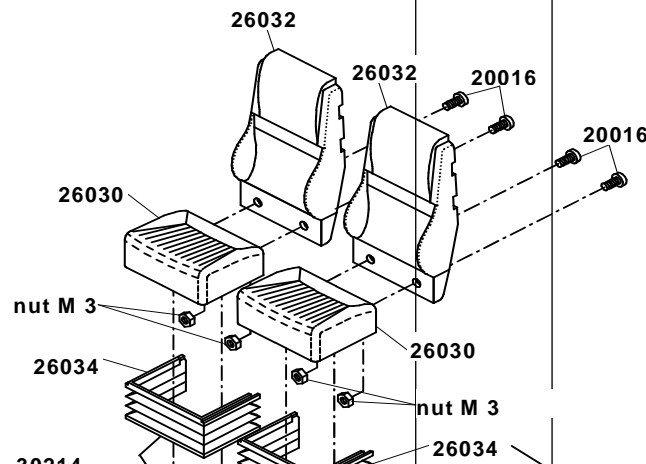
#### 5.1 Assembly lock

The roof with the upper part of the back is gently fixed to the driver's cab so that it easily can be removed. The roof is barred by two door locks 20086 which reach behind the tin plate at the side parts.

Tighten the door handle 20084 with a nut M3. Now put the door lock 20086 on the door handle, so that the hole for the square nut M3 21690 is downwards. Align the handle parallel to the door lock. Then hold the door lock with pliers when tightening another nut M3. After placing a spring washer 20056 and a washer 20046, the handle is pushed through the respective hole at the left side of the locking sheet for the roof 27292. Place a washer from the back side 20046 and lock with 2 nuts M3. In the same way equip the locking sheet for the roof at the right side 24294 with a handle.

Assembly step 5.1 lock

Qty.	No.	Assembly part
4	20016	Screw M3 x 6
2	20028	Countersunk screw M3 x 6
8	20040	Nut M3
4	20044	Square nut M3
4	20046	Washer $\phi$ 3,2
2	20056	Spring washer A 3,2
2	20084	Door handle
2	20086	Door lock
3	20238	Screw M2 x 5
1	27290	Guide sheet for roof
1	27292	Locking sheet für roof, left
1	27294	Locking sheet for roof, right



### 6. Assembly Seat

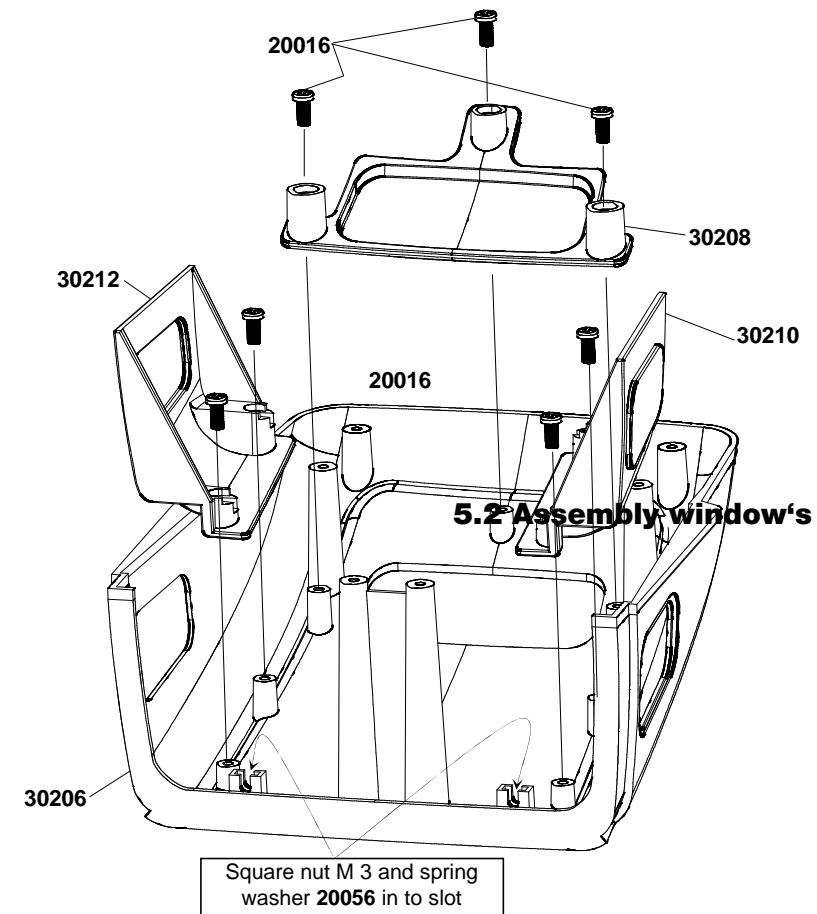
Assembly step 5.2 windows

Qty.	No.	Assembly part
7	20016	Screw M 3 x 6
2	20044	Square nut M 3
7	20046	Washer $\phi$ 3,2
2	20056	Spring washer A 3,2
2	30122	Hex head screw M 3x12
1	30206	Roof
1	30208	Upper window top
1	30210	Upper window left
1	30212	Upper window right

#### 5.2 Assembly window's

Both upper windows 30210 left and 30212 right are each fixed with a screw 20016 M 3 x 6 and a washer 20046  $\phi$  3,2 to the roof of the driver's cab 30206.

Before fixing the upper window 30208, first the back of the cab 30176 has to be clamped to the roof of driver's cab. Take a spring washer 20056  $\phi$  3,2 and a hex screw 30122 M 3 x 12 and screw these into a square nut 20044 M 3. Push this assembly into a slot in the top of the cab. Put the previously mounted back of the cab 30176 into the slide of the cab roof 30206. Take a long socket  $\phi$ 5,5 mm (working through the window hole) to fasten the hex head screws in the roof to the back of the cab, which you now can finally tighten with a ring wrench (5,5mm). Thereafter the upper roof window 30208 is tightened with 3 screws 20026 M 3 x 6 and one washer  $\phi$  3,2 each 20046.



#### 6. Attachment of the

Assembly step 6 seat

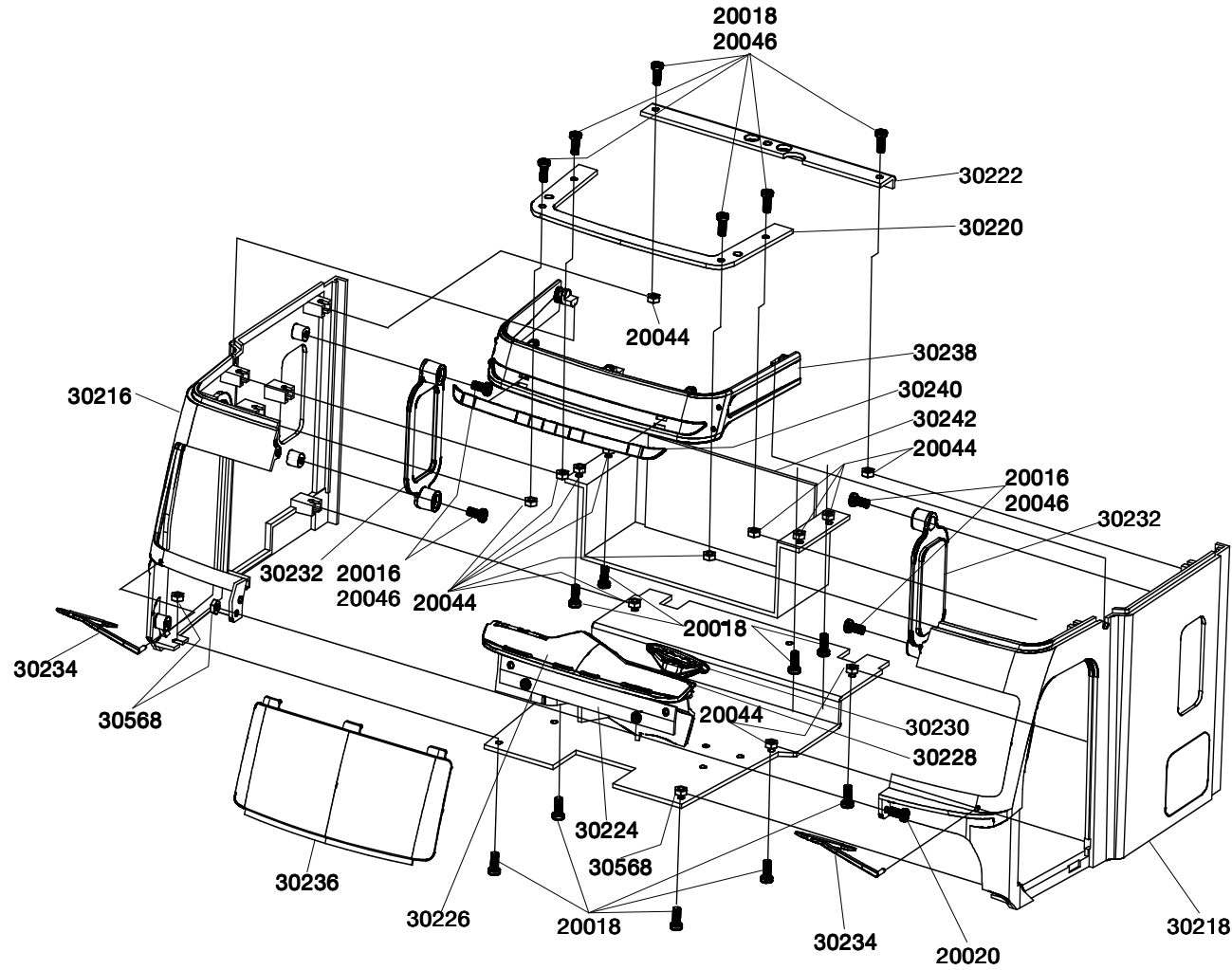
Qty.	No.	Assembly part
4	20016	Screw M 3 x 6
4	20040	Nut M 3
4	20224	Screw M 3 x 20
2	26030	Foot, bucket seat
2	26032	Back, bucket seat
2	26034	Socket, bucket seat
1	30214	Ground plate Freightliner

#### seats onto the floor plate

Fix the seat backs 26032 with screws 20016 M3 x 6 and nuts M3 onto the seat sockets 26034. Then press the swing seats 26030 onto the seat sockets and fix the complete seat units with screws 20224 M 3 x 20 onto the ground plate 30214.

## 7. Driver's cab

In the front part the driver's cab and the bottom plate are fixed with one screw 20018 M 3



### 7. Assembly driver's cab

Put the side bodys, left 30218 and right 30216, together and tighten with a screw 20020 M 3 x 10 and a stop nut 30568. Put one square nut each 20044 M 3 into the upper fixing slots of the side bodys. Fix the rear connection plate 30222 with 2 screws 20018 M 3 x 8 and one washer 20046 ø 3,2 each. Pay attention that it fits exactly between the side bodys!

Now the pre-assembled driver's cab doors are mounted. Take 2 screws 20016 M 3 x 6 and 2 washers 20046 and screw the doors with the driver's cab.

Next the wind screen 30236 ist fitted in. The dashboard connection plate 30224 is from the backside attached to the door hinge with 2 screws 20018 M 3 x 8 and 2 washers 20046 ø 3,2 and square nut M 3 20044. Pay attention to the correct position of the plate, i.e. the inside bore-holes are at the bottom and the bevel goes inside.

The gear shifter (see the plan) 30228 is fixed to the dashboard 30226 with a screw 20016 M 3 x 6. The steering wheel 30230 is fixed with glue.

The complete unit is attached to the dashboard connection plate with 2 screws 20016 M 3 x 6.

The two lower windows 30232 are also attached to the side bodys with 2 screws 20016 M 3 x 6 and 2 washers 20046 ø 3,2. The sun visor lens 30240 is pressed into the sun visor 30238. Put the sun visor on the driver's cab and put 4 square screws into the front slots of the driver's cab. The front connection plate 30220 is now put on the of the square nuts and fixed with 4 screws 20018 M 3 x 8 and 4 washers ø 3,2.

If you want to assemble additionally an electrical system, it is necessary to insert the switch panel and the battery into the back of the seat, respectively into the battery box 30242. Both parts are now put into the driver's cab and tightened. For that the 4 square nuts 20044 M 3 are put into the slots of the inside bodys of the driver's cab. Both parts are held by 4 screws 20018 M 3 x 8.

Now the driver's cab is fixed at the bottom plate with 4 square nuts 20044 M 3 which are pushed into the slots at the lower side of the cabin. Give one screw 20018 M 3 x 8 each with washer 20046 ø 3,2 very carefully through the bottom plate and tighten them.

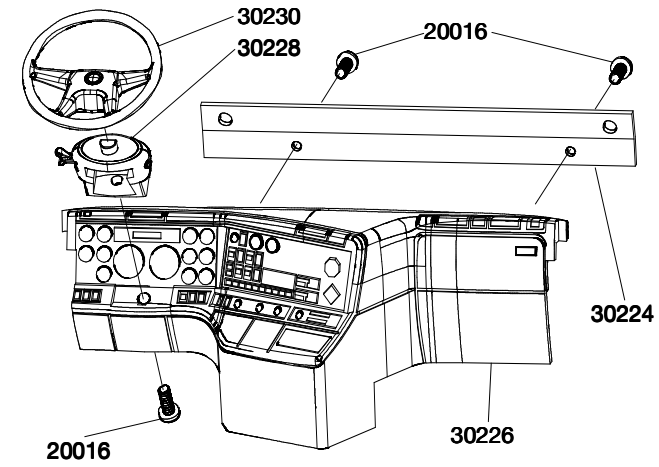
x 8 and one washer ø 3,2 each and with a stop nut M 3 30568.

Finally the two windscreen wipers 30234 are put on. A little drop of glue will keep them in the right position.

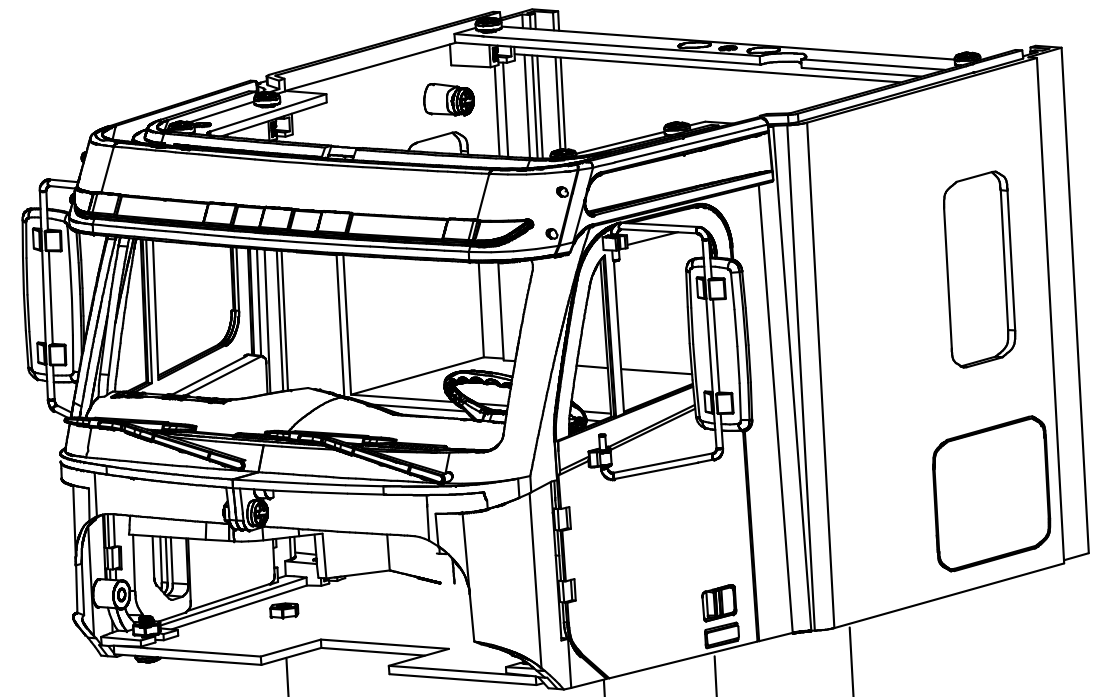
### Assembly step 7 Driver's cab

Qt.	No.	Assembly part
7	20016	Screw M 3 x 6
16	20018	Screw M 3 x 8
1	20020	Screw M 3 x 10
16	20044	Square nut M 3
20	20046	Washer ø 3,2
1	21962	Seat mounting panel
2	22900	Washer ø 3,2 big
1	30216	Side body right
1	30218	Side body left
1	30220	Connection plate front
1	30222	Connection plate rear
1	30224	Dashboard connection plate
1	30226	Dashboard
1	30228	Gear shifter
1	30230	Steering wheel
2	30232	Lower window
2	30234	Windscreen wiper
1	30236	Windscreen
1	30238	Sunvisor
1	30240	Survivor lens
1	30242	Battery box
3	30568	Hex head nut M 3 (Stop nut)

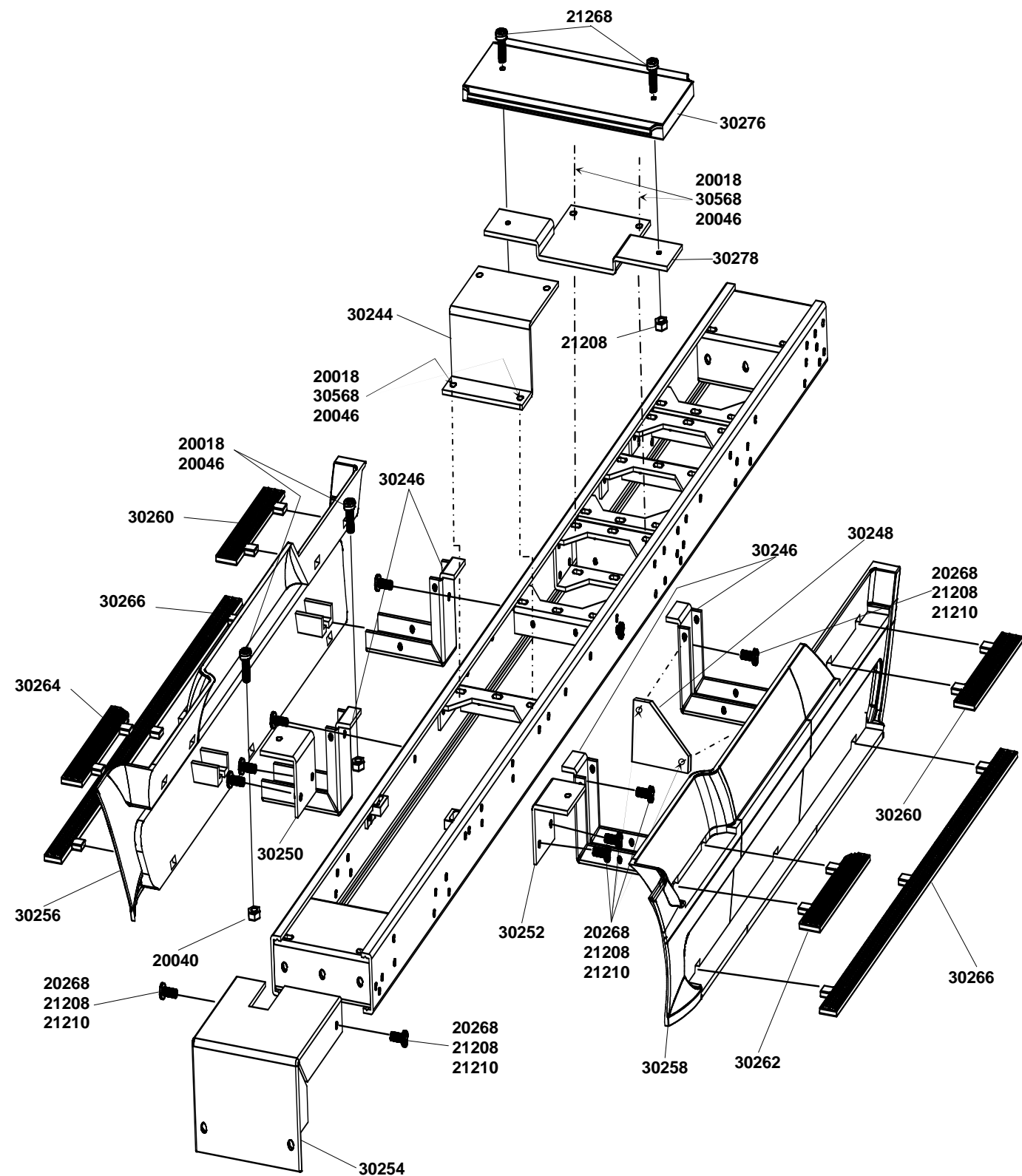
### 7. 1 Assembly Dashboard



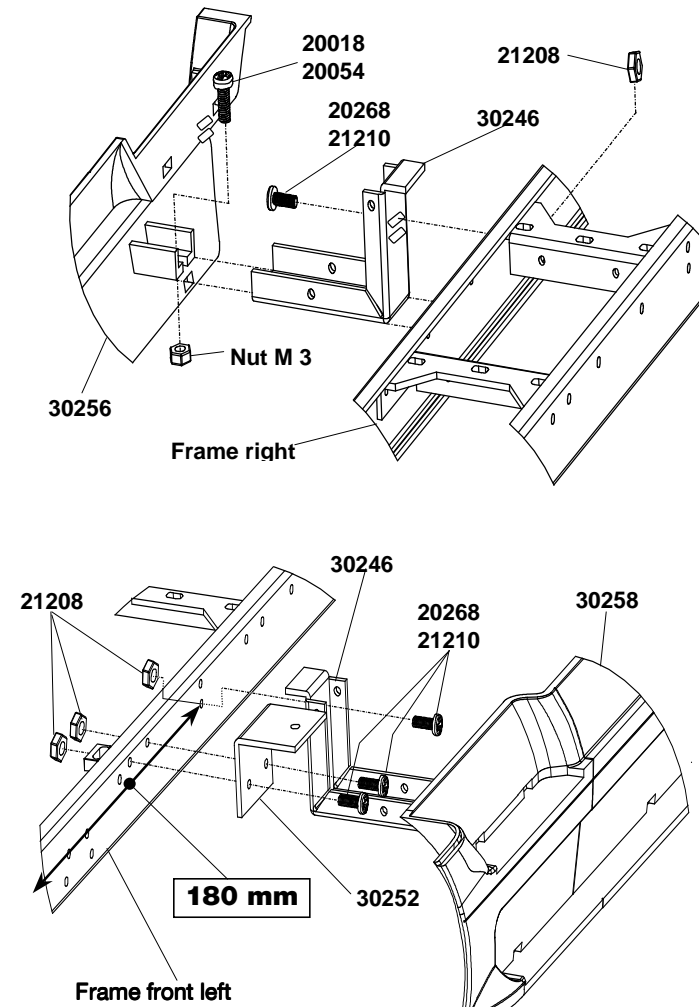
### Driver's cab compl.



## 8. Finishing of the frame units



### 8.1 Side body



### 8.2 Assembly

Start mounting the complementary parts from the rear to the front. The step footboard in the rear **30240** is fixed to the support **30242** with 2 screws **21268** M 2 x 6 and 2 nuts **21208** M 2. The support footboard **30242** is fixed with 2 screws **20018** M 3 x 8 and 2 washers and 2 stop nuts **30568** M 3 to the crosshead 2 in front of the first rear axle. The rear support for the driver's cab is fixed to the **first** crosshead with 2 screws **20018** M 3 x 8, 2 washers **20046** φ 3,2 **20046** and 2 stop nuts **30568** M 3.

Next the 8 reinforcement plates **30248** are fixed to the right and the left connection plates with 2 screws **20018** M 2 x 8, 2 washers **21210** φ 2,2 and nut **21208** M 2. The 4 connection plates **30246** for the lower side body are fixed each with one screw **20268** M 2 x 8, a washer **21210** φ 2,2 and a nut **21208** M 2. One support each is in front of the first crosshead (180 mm measured from the front). The screw is from above put through the 2<sup>nd</sup> slot in the support and the 2<sup>nd</sup> bore hole and then tightened with a washer and a nut.

The two other supports are in front of the rear step board. A screw **20268** M 2 x 8 with a washer **21210** φ 2,2 is put through the **upper** slot of the support into the bore hole of the frame and fixed with a nut **21208** M 2. Not yet tighten the screws of the supports, because of a possible correction of the side bodies after the assembly of the motor hood.

The two supports for the driver's cab **30250** right and **30252** left are also fixed on the frame with 2 screws **20268** M 2 x 8, washers **21210** φ 2,2 and nuts **21208** M 2. Pay attention that the upper faces are parallel to the frame.

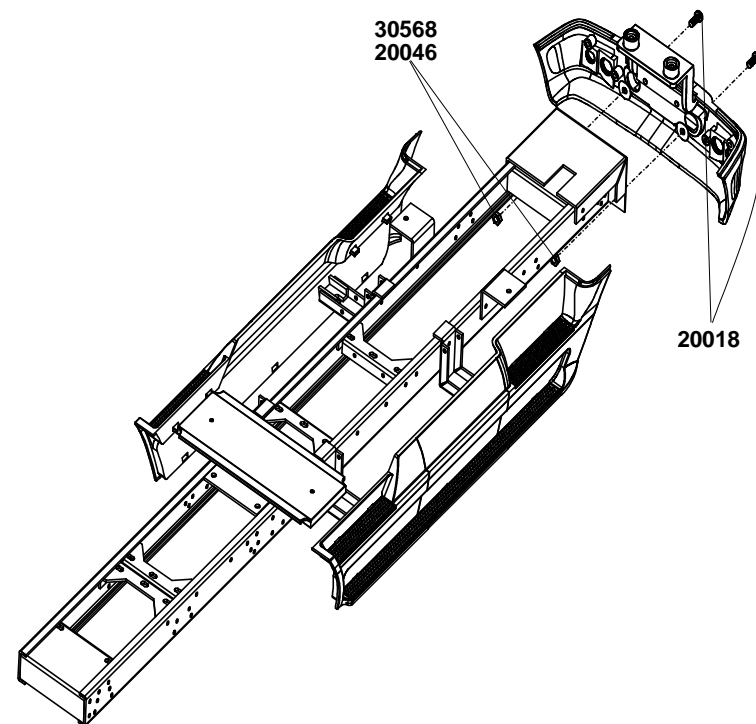
The bumper bracket **30254** is also fixed to the frame with 2 each screws **20268** M 2 x 8, washer **21210** φ 2,2 and nuts **21208** M 2.

The step boards **30260** rear, **30262** front left, **30264** front right and **30266** long are fixed with double-sided adhesive tape at the side parts. Now the both side bodies **30256** right and **30258** left are fixed on the frame with 2 screws **20018** M 3 x 8, 2 serated washers φ 3,2 and 2 nuts M 3. Slide the side bodies to the supports.

Assembly step 8 Component's frame		
Qty.	No.	Assembly part
8	20018	Screw M 3 x 8
4	20040	Nut M 3
8	20046	Washer φ 3,2
4	20054	Serated washer A φ3,2
28	20268	Screw M 2 x 8
30	21208	Nut M 2
28	21210	Washer φ 2,2
2	21268	Screw M 2 x 6
1	30242	Support footboard, rear
1	30244	Support driver's cab, rear
4	30246	Connection plate, lower side body
8	30248	Reinforcement plate's
1	30250	Support driver's cab, front right
1	30252	Support driver's cab, front left
1	30254	Bumper bracket
2	30256	Lower side body right
2	30258	Lower side body left
2	30260	Short step board, rear
1	30262	Step board, front left
1	30264	Step board, front right
1	30266	Long step board
1	30276	Step footboard, rear
1	30278	Support footboard, rear
4	30568	Hex head nut M3 (Stop nut)

First the serated washer is put under the head of the screw, in order to bridge the opening of the slot.

### 8.3 Assembly bumper



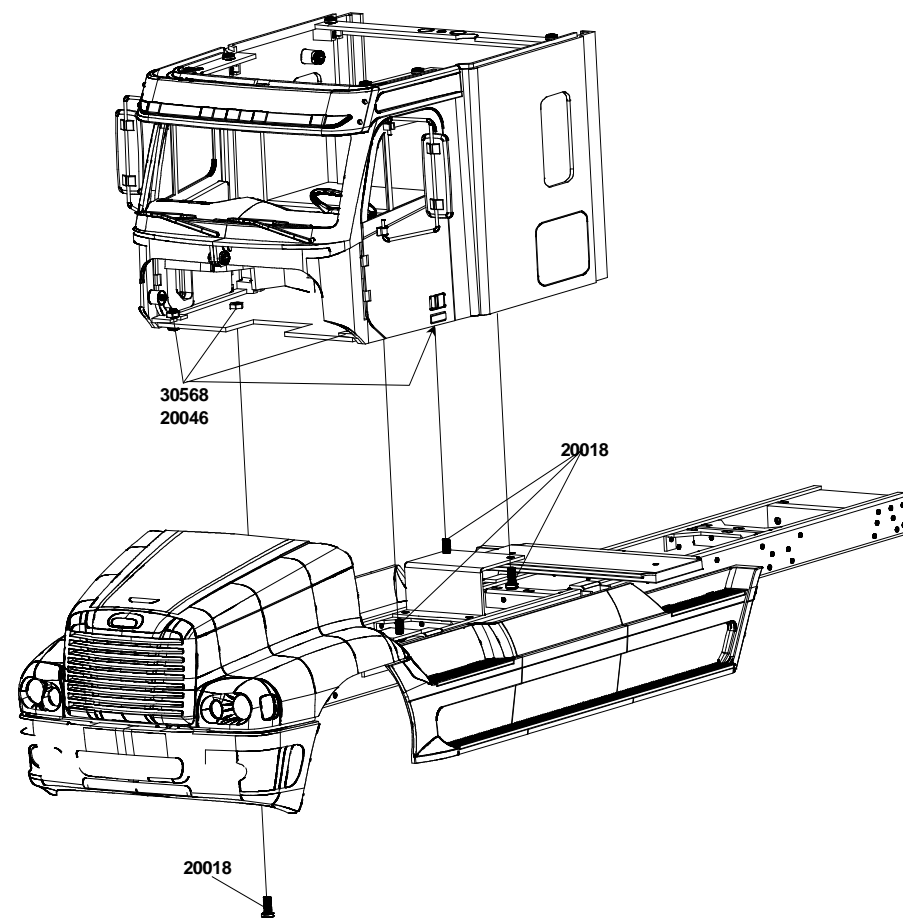
Assembly step 8.3 Bumper

Qty.	No.	Assembly part
2	20018	Screw M 3 x 8
2	20046	Washer $\phi$ 3,2
2	30568	Hex head nut M 3 (Stop nut)

### 8.3 Assembly bumper

Before mounting the single groups to the chassis these should be completely assembled. When inserting an electrical system also these groups have to be mounted to the chassis. The bumper with engine hood are fixed to the frame with

### 8.4 Assembly driver's cab



### 8.4 Assembly driver's cab

The driver's cab is fixed to the frame with 4

Assembly step 8.4 Driver's cab

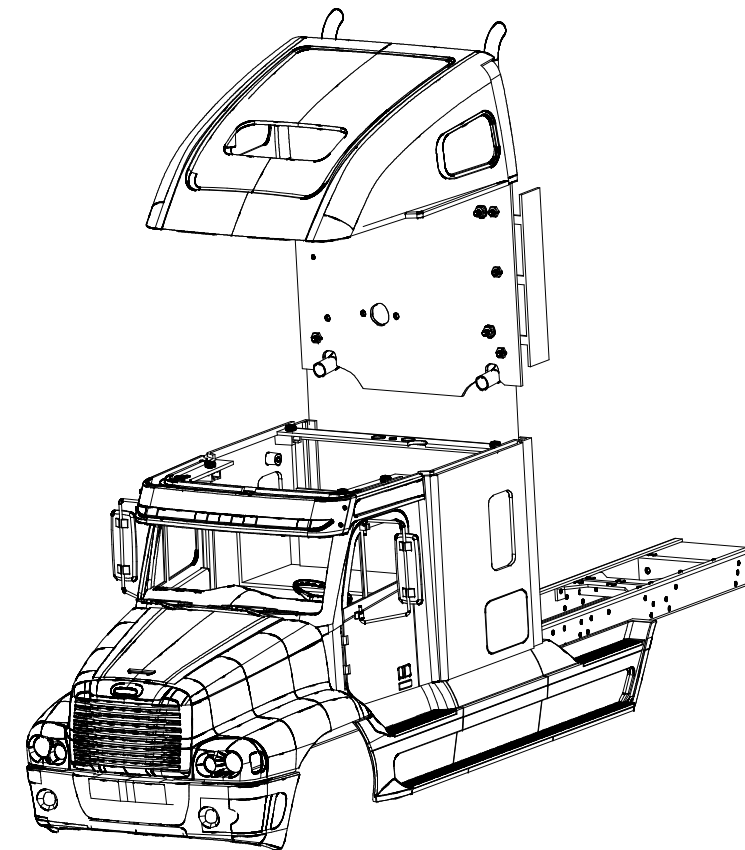
Qty.	No.	Assembly part
4	20034	Screw M 3 x 10
4	20046	Washer $\phi$ 3,2
4	30568	Hex head nut M 3 (Stop nut)

screws 20034 M 3 x 10, 4 washers  $\phi$  3,2 and 4 stop nuts 30568 M 3. Now the side bodies can be adjusted: slide these forwards and backwards till a tidy passage to the fender of the engine hood is achieved. Now the side bodies can finally be screwed.

### 8.5 Assembly roof

### 8.6 Assembly side spoiler

### 8.5 Assembly roof



The roof is pushed together with the assembled back into the slots of the side bodies. The guiding bolts pose the right place automatically. The roof is barred with the door handles.

If requested an electric system has to be mounted into the driver's cab before the roof is put on.

### 8.6 Assembly side spoiler

Fix a double-side adhesive pad on the supports of the side spoilers. Then fix the spoiler 30268 right and 30270 left with the same distance from the driver's cab. The two side

Assembly step 8.6 Spoiler

Qty.	No.	Assembly part
1	30268	Side spoiler right
1	30270	Side spoiler left
2	30274	Side spoiler lens
2	30552	Double-side adhesive pad

spoiler lenses 30240 are pressed into the bore holes of the spoiler.

